

Server Consolidation

A BENEFIT OF THE OPTICALLY ENABLED ENTERPRISE

Customer profile

This well-known company was founded in the first half of the nineteenth century to alleviate the hardship of families facing misfortune. Today its Life and Pensions business pays out an average of £12m every working day and is underwritten by investments of over £60bn.

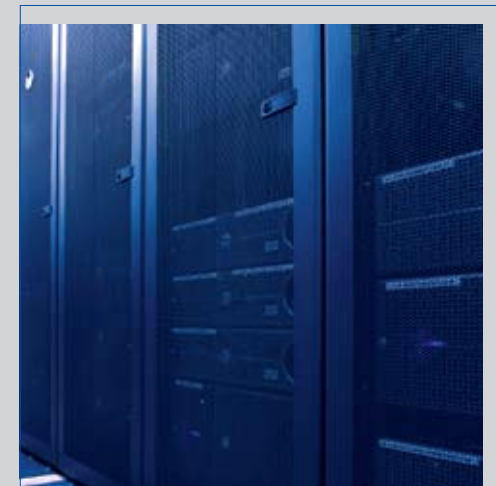
Its published corporate strategy is to grow its market share by, among other things, "applying technology and e-commerce to enhance distribution, improve service and reduce costs".

Business requirements

For historic reasons, the company's business is managed from three main offices in different parts of the country. This has resulted in a need for separate IT facilities at each site. The business wanted to minimise this duplication of resources with an optical networking infrastructure that would give staff at each location access to a single set of IT services.

As well as reducing costs, the company wanted to enhance the service to its clients by removing many of the problems associated with managing multiple copies of the same data.

A further benefit would be the freedom to locate staff, over time, to where they would be most-effective irrespective of where servers were located.



Server Consolidation



Server Consolidation

A BENEFIT OF THE OPTICALLY ENABLED ENTERPRISE

The challenge

These business demands called for a network with some challenging characteristics. It had to:

- ▼ Be so fast that users would never, ever, see any difference between accessing in-house or remote servers
- ▼ Maintain the flexibility to adapt to requirements for relocation of operational and business-continuity sites following de-mutualisation, restructuring and acquisition activities
- ▼ Support a rapidly evolving IT and DR strategy without constraints on the choice of communication or storage protocols

The benefits

After carefully reviewing all options, it was decided that Vtesse Networks was best equipped to meet these network requirements.

The solution we proposed was extremely flexible, allowing access throughout the UK. Bandwidth is upgradeable to many tens of Gbps in days and in scalable increments. Unlike tariff based services, this can be done at marginal cost.

There is extremely low network delay. The point-to-point, dedicated, non-route switched connections provide imperceptible delay of less than 0.5 milliseconds over 100 km, with these latency levels guaranteed in service level agreements.

Our solution is also protocol-independent, carrying any storage or data protocol (and voice over IP) in native format, and there is no need for specialised WAN support skills.

With reliability a critical requirement of the network, we were pleased to be the only company providing back-up routes with no single points of failure and diversity guaranteed over every route-metre.

What our clients say...

“Vtesse Networks is the only company we’ve used that has done what it said it would when it said it would.”

Vtesse Networks Limited
John Tate Road
Foxholes Business Park
Hertford
Hertfordshire SG13 7DT

Telephone +44 (0)1992 532100
Email sales@vtesse.com
Website www.vtesse.com